

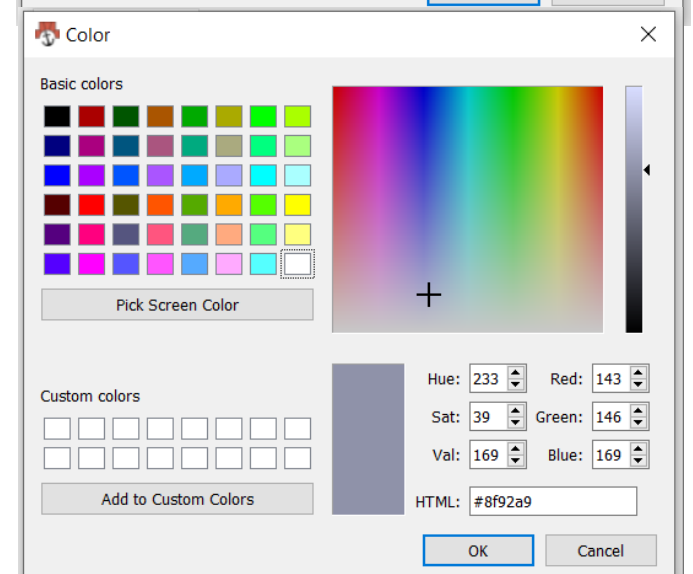
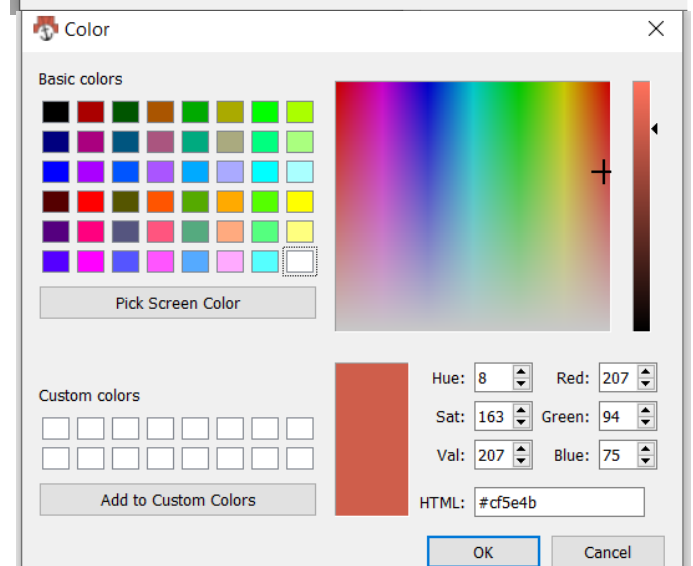
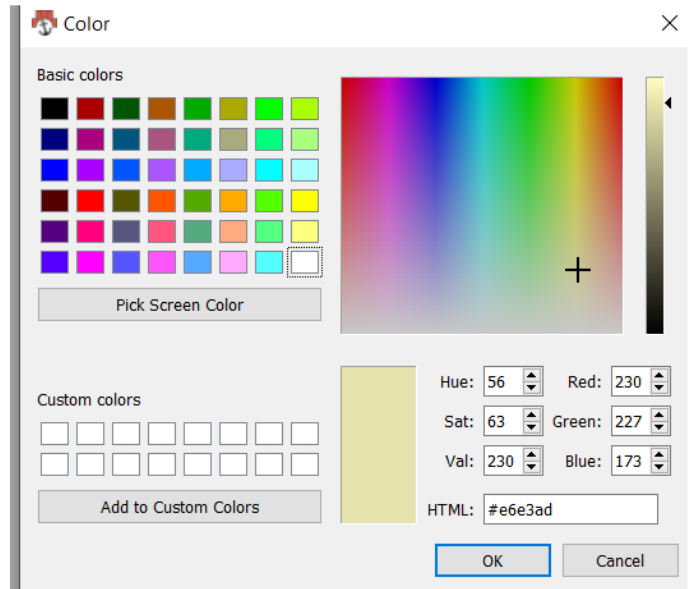
Directions and settings for AnkerPlan2 version 2.4.4 and CorelDraw 2019 for BiK drawings

Fred Hartjes

April 8, 2022

Settings of the Ankerplan colours

The default colours in Ankerplan deviate significantly from Richter's colours. Therefore, after multiple experiments, I came to the following colour settings for drawings in the CVA Bauvorlagen booklets.



Setting the 3D camera parameters

Presently only the predefined settings can be used. For other settings rendering does not work. By default, the horizon is put in the middle of the building, making the roof part less visible. To avoid this, at Richter's drawings the horizon is set at a much higher level. Note that this often does not correspond to the horizon of the background illustration. To still raise the horizon of the building, we simply add a perspective stone, i.e. one of the available stones and let it float substantially above the building. In this way the horizon of the building can be set on any height.

Render settings for AnkerPlan2

Paper size A2, Draw drop shadows.

300 dpi, 72 dpu, user defined scale 1: 4.101.

Scale factor for cross sections in Coreldraw **41.7%**.

Line width

- 2 pixels for cross sections
- 3 pixels for 3D and gables.

Illumination settings for AP2 in 3D view with drop shadows

1. The direction of the drop shadow is determined by the relation between the X and Z values. Positive X => shadows left, negative X shadows right.
2. The length of the shadow is determined by the relation between the Y value and the X and Z values, I suppose $\sqrt{X^2 + Z^2}/Y$. A small Y value gives a long shadow. Y should always be positive
3. The X, Y and Z values have a range from -1.00 to 1.00. So for small drop shadows Y has to be set to 1 and |X| and |Z| have to be made smaller than 1.

View

3D-view A
3D-view B
3D-view C
3D-view D
3D-view E

Camera position

Position: Focus:

X 1665.57 110.76
Y 704.85 704.85
Z 2110.32 -110.85

Aperture: 39.05°

Center complete view
Keep camera upright
Set Save
Delete

Illumination

Ambient light: Color...
Sun light: Color...

Light direction
X Y Z
-0.80 0.30 0.80

Link light with camera
Reset Set
Delete

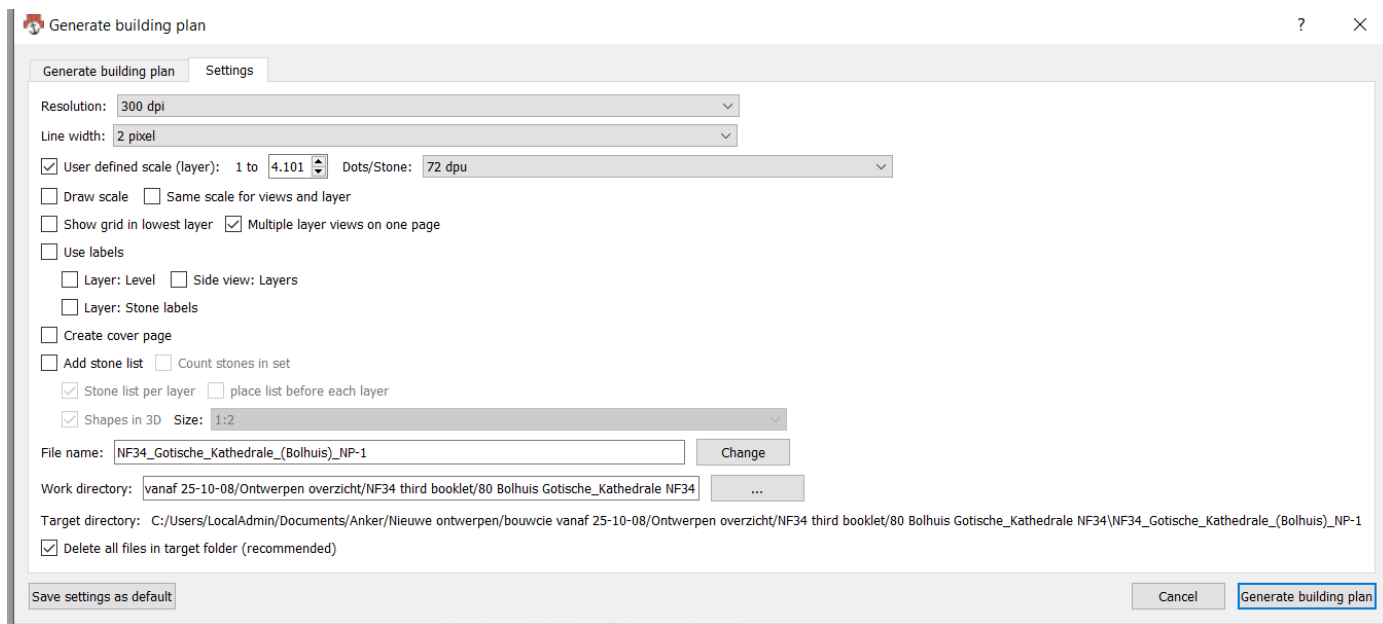
Illumination

Ambient light: Color...
Sun light: Color...

Light direction
X Y Z
-0.80 0.30 0.80

Link light with camera
Reset Set

Other settings for AP2 in 3D view



Drawing size always A2.

Kleurcorrectie met ctrl B: 5; 13; 1.

Settings for AP2 in side views

Idem, drawing size A2