

24

Status of the CVA design committee

Baukunst im Kleinen (BiK)

**Martin van Beuzekom, George Bielen,
Fred Hartjes, Guus van Kessel and Pet Petrauschke**

Designs of Architectural Models,

to be erected with RICHTER'S "ANCHOR BLOCKS".
U. S. Patents March 6th 1900.

No. 24 new series.

Twelfth standard for building with stones of the large caliber.

Composed by several CVA members and executed by BiK.

Modelos
de Construção
No. 24 nueva serie.
Duodécimo grado de construcciones
con piedras de gran calibre.
Compuestos por varios partidos
y ejecutados por BiK.
Registrado!

No. 24 neue Folge.

(Zwölfte Stufe für das Bauen mit Großkaliber - Steinen)

Entworfen von mehrere CVA Mitglieder und ausgeführt von BiK.

Modelos
de Construção
No. 24 nova série.
Decimo segundo grau para construir com pedras de
grande calibre.
Construções de varios membros CVA
por BiK.
Registrado!

Modèles de Construction

No. 24 nouvelle édition.

Douzième degré de construction exécutées à l'aide de pierres grand calibre

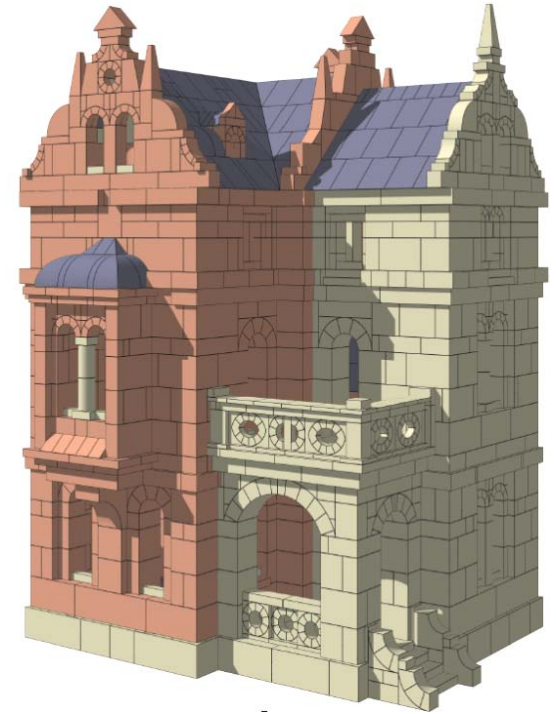
Conçus par plusieurs membres du CVA et exécutés par BiK.

Reproduction interdite!

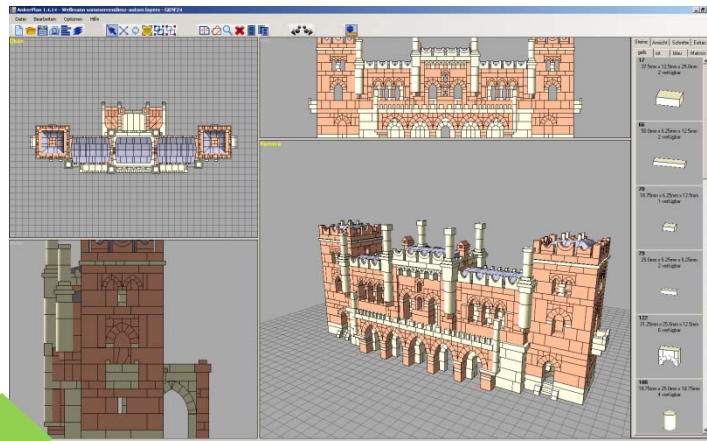
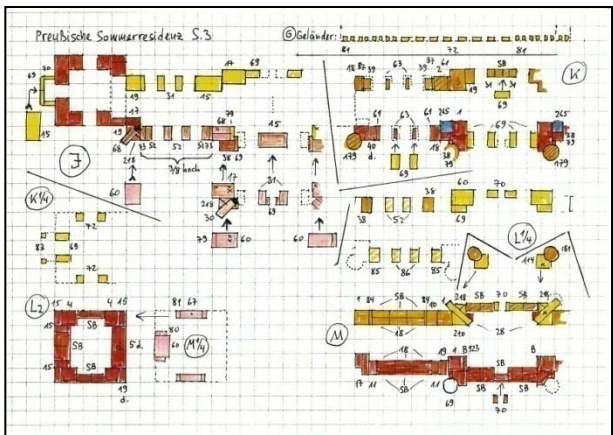
CVA meeting
Hilversum, October 20, 2012

Purpose of “Baukunst im Kleinen” (BiK)

- ◆ Reviewing **new** designs for the stone sets that are produced by the new Anker factory
- ◆ => Presently only NF sets
- ◆ A design published by BiK has the **guarantee** that
 - The building can be made with the stones of the set it is intended for
 - The building is stable
 - The common Ankerfriend can built it without much problems
 - At least 75% of the stones is actually used
 - The building has certain esthetical qualities
 - The design is drawn according to Richter standards
- ◆ ~~we do not consider large designs requiring specific stone sets~~

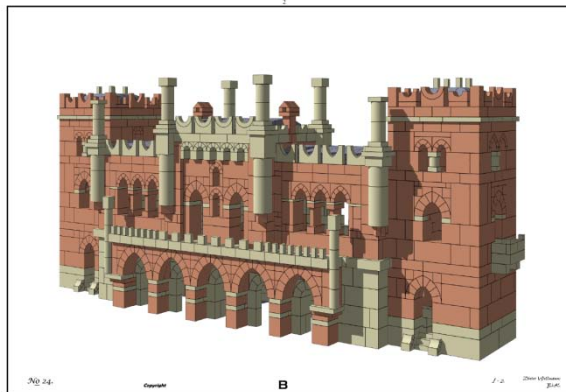
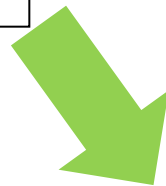
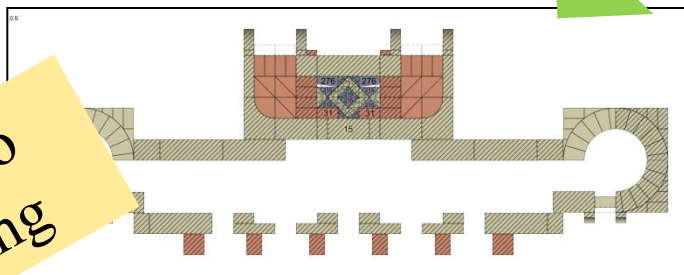


Villa 24 Gundel NF24



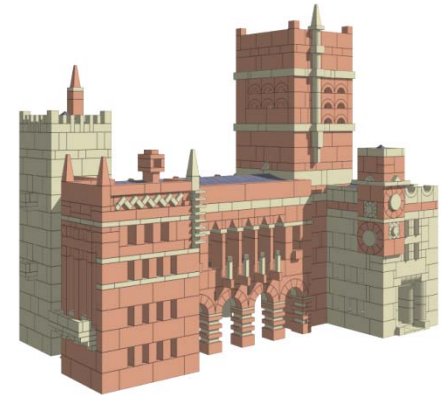
Working method

From draft design to publication drawing



Overview of present activities

- ◆ NF 24 booklets ready since spring 2012
 - Way of publishing still in consideration at CVA board
 - Attractive to distribute it among all CVA members for free
 - But also expensive
- ◆ Publishing NF22
 - Almost completely done by Burkhard Schulz
 - Only cathedral for 2x NF22 still to be finished

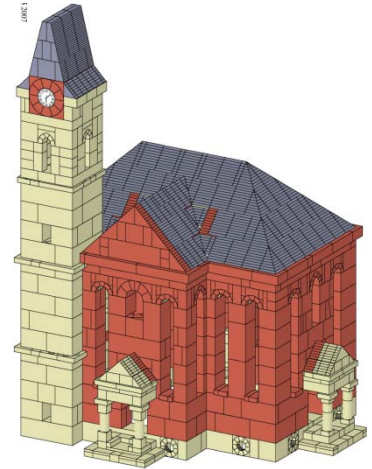
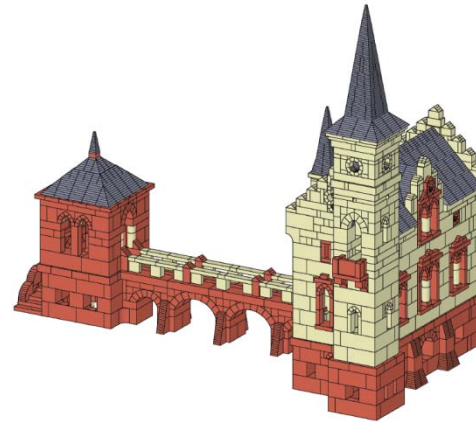
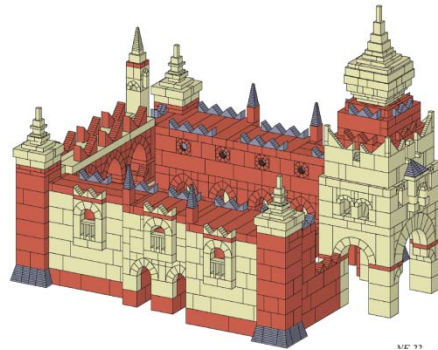
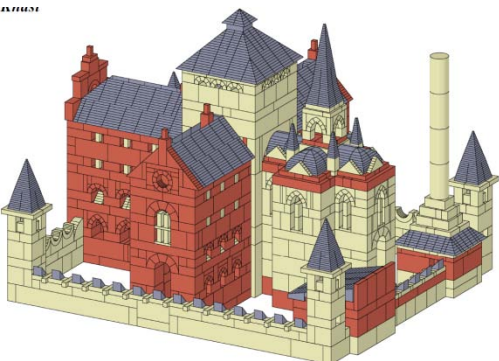
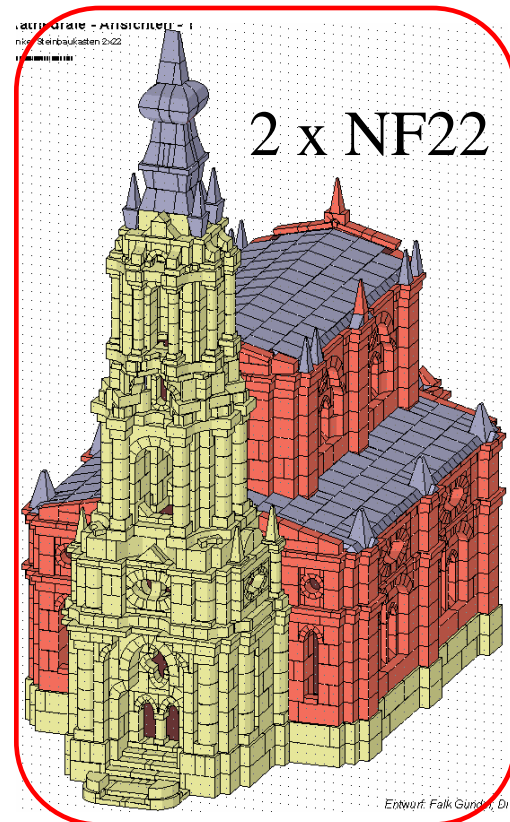
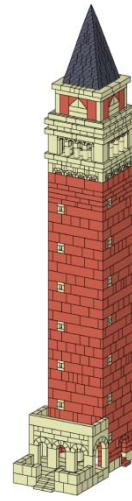
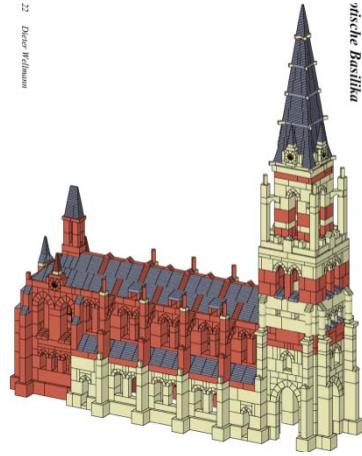
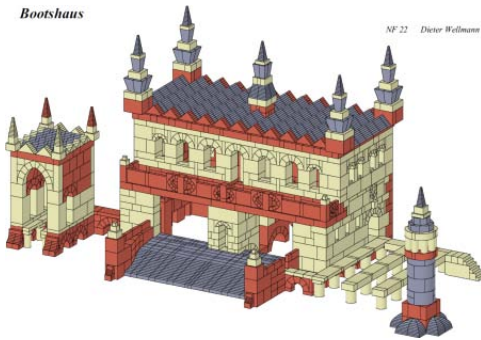


- ◆ NF26 (8 designs) and NF28 (3 designs) to be combined in one set of booklets

System#	reception date	designer	designer's number	Name	NF stage	kind of documentation	review date	review status	in AP?	present activity	person involved	
3		Bielen		Landhuis	26	AP	24/1/2009	1st review done	XXX	make final drawings	Fred, Martin	x
4		Gundel	42	Frauenkirche	26	prints	25/12/2008	1st review done	-	wait until new AP		
9		Wellmann	112	Villa 1912	26	hand drawings	4/4/2009	1st review done	XXX	make final drawings	Fred, Martin	
33	16/3/2011	Wellmann	91	Erlebnisbrucke	26	AP + hand drwgs		1st review done	XXX	make final drawings	Fred, Martin	x
34	28/3/2011	Bielen		Gotische Kerk	26	AP		1st review done	XXX	make final drawings	Fred, Martin	x
46	5/6/2011	Gundel		Residenz	26	pdf prints		not yet in review	-	wait until new AP		
48	5/6/2011	Wellmann	94	Rathaus	26	AP + hand drwgs		1st review done	XXX	make final drawings	Fred, Martin	x
49	4/2/2012	Bruckmann		Barockschloss	26	hand drawings		1st review done	XXX	make final drawings	Fred, Martin	
2		Wellmann	99	Prefecture	28	hand drawings	25/12/2008	1st review done	XXX	make final drawings	Fred, Martin	
6		Wellmann	97	Ungarisches Thermalbad	28	hand drawings	6/5/2009	1st review done	*			
11	22/1/2009	Bruckmann		Huize Ruurlo	28	hand drawings	1/11/2009	1st review done	*			
-	1/3/2012	Gundel		Gotische Kathedrale	2x22	prints		in review		put in AP	Martin	

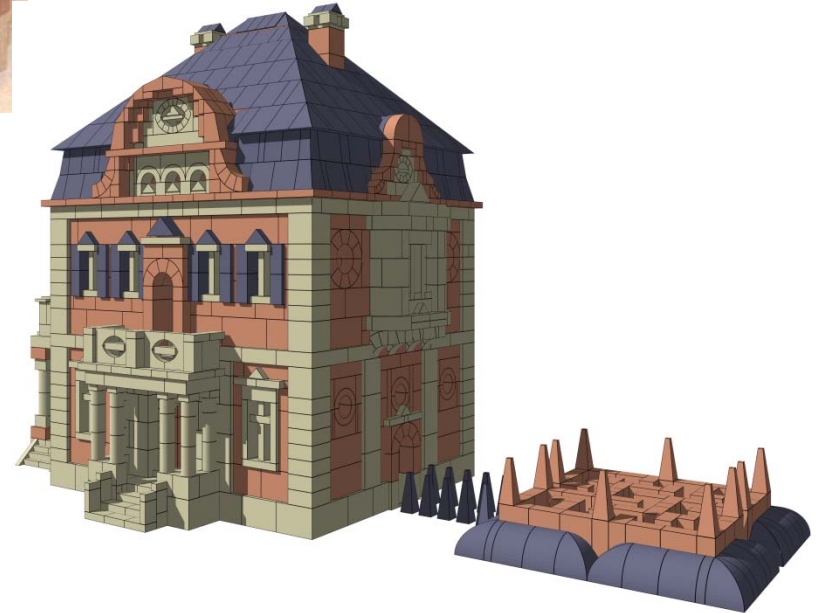
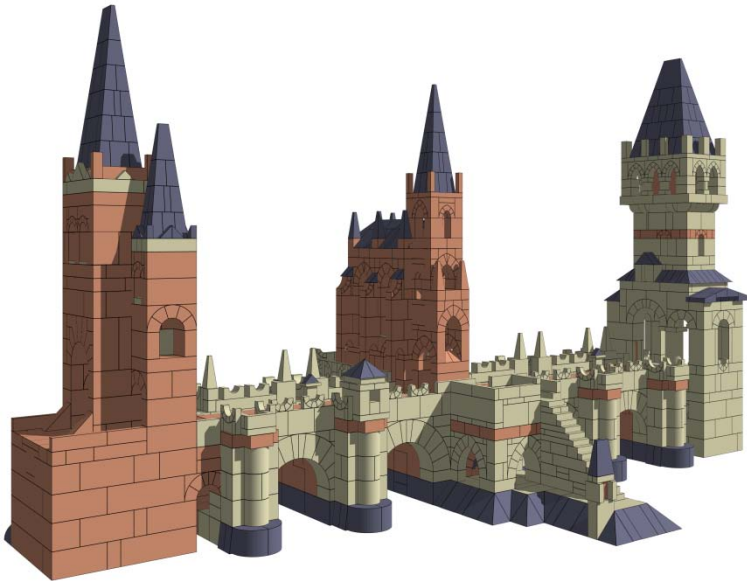
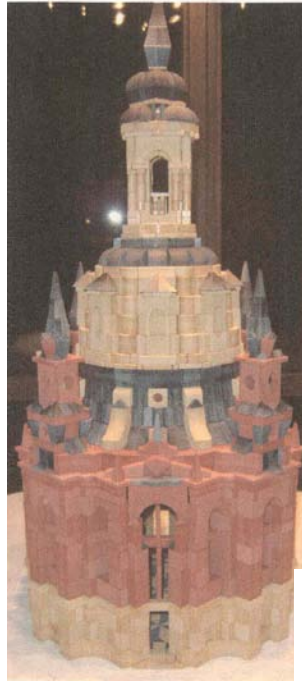
NF 22

- ◆ Mostly drawn by **Burkhard Schulz** (in pdf)
- ◆ Gerhart Bruckmann, Dieter Wellmann (4x), Falk Gundel (3x) and Walter Hürlimann

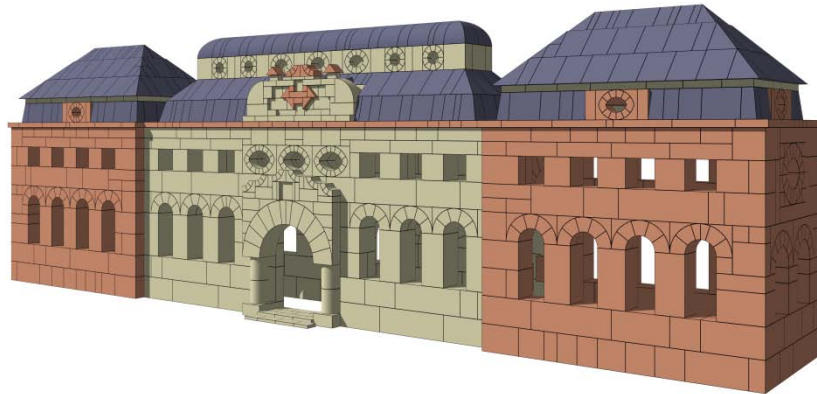
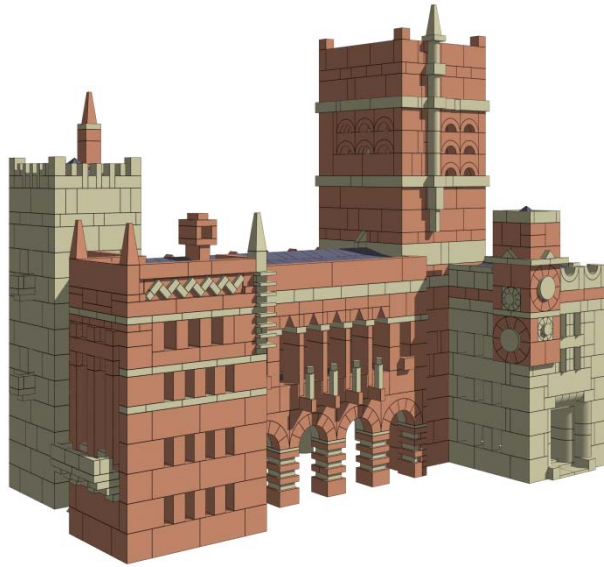


NF 26

George Bielen (2x), Dieter Wellmann (2x) and
Falk Gundel

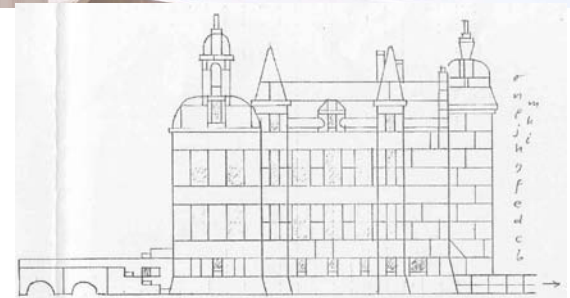
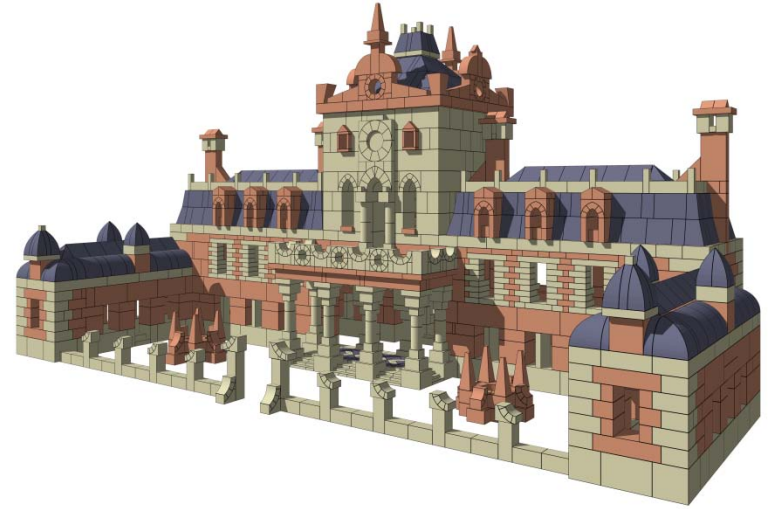


NF 26



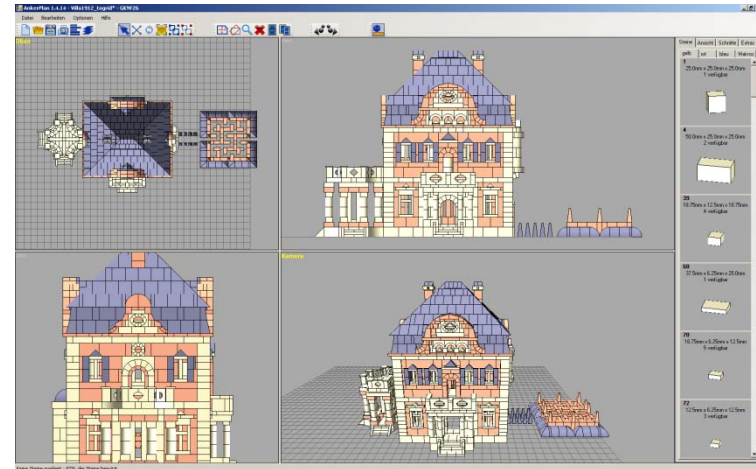
Dieter Wellmann (3x), Falk Gundel and Gerhart Bruckmann (2x)

NF 28

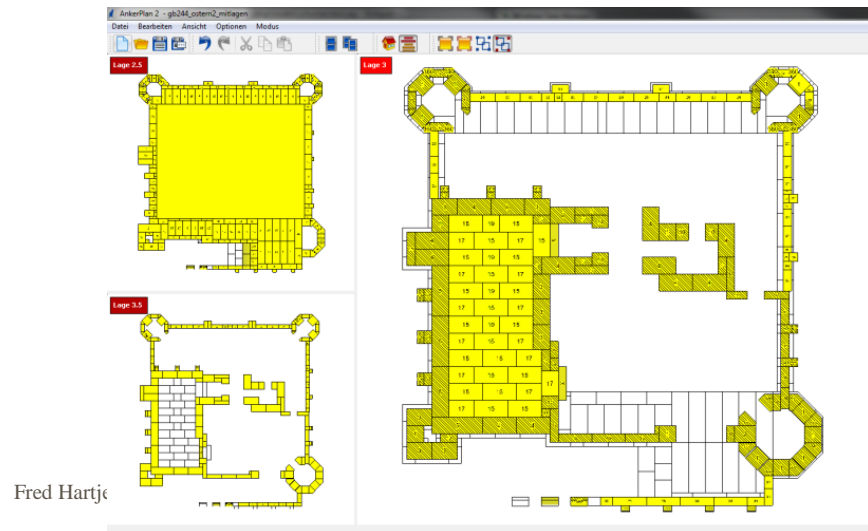
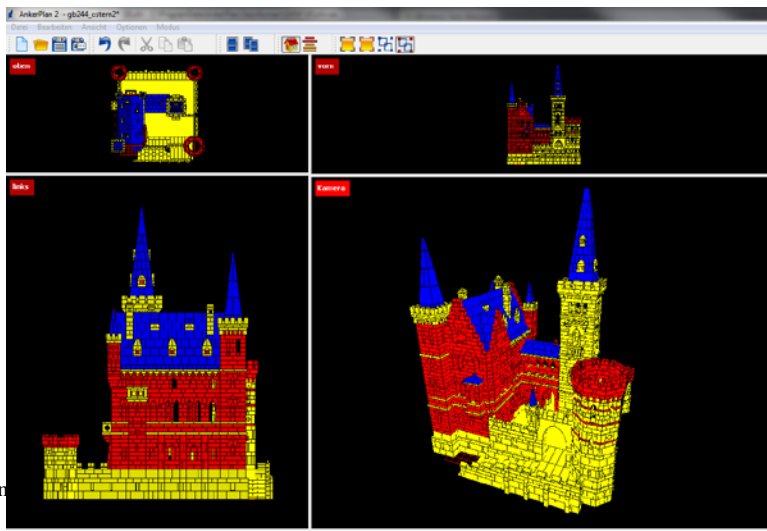


Progress with Ankerplan

- ◆ Presently we are using AnkerPlan 1.4
 - Developed by Flying Cat (Christian Korn)
 - Used to draw 3D views and cross sections
 - Gives a lot of flexibility on placing stones
 - Other angles than 90° possible
 - Detection of errors (collisions)
 - Extensive stone library
 - Genuine 3D views, not isometric



- ◆ But number of bugs and less practical things still exist
 - Not easy to solve in present version
- ◆ Flying Cat working on AnkerPlan 2.0 since autumn 2011
 - Alpha version finished



Development AnkerPlan 2.0 abruptly ended now

- ◆ Recently worries have been brought up by Flying Cat's lawyer about violating patent rights of Lego related firms
 - Based on the system of constructions from stone blocks using 3D drawings and cross sections
 - Claims in millions of Euros cannot be excluded



- ◆ **But**
- ◆ Patent problems might have been avoided if a private person without commercial interest would take over the development of Ankerplan 2.0

Looking for an Ankerfriend experienced in C++, Qt, DirectX and OpenGL

- ◆ Maybe CVA as a non-commercial organization could take over the distribution of AnkerPlan



Concluding

◆ NF24 booklets ready for print

- To be put on Anker site <http://www.ankerstein.ch/downloads/CVA/CVA.htm>

◆ Completing NF22

- 8 designs done by Burkhard
- 1 design to be done (2 x NF22)

◆ NF26/28 in progress

◆ AnkerPlan 2.0 development for biggest deal finished

- But abruptly terminated because of patent worries

◆ Looking for person/non profit organization who can

- Finish Ankerplan 2.0
- Distribute Ankerplan 2.0

Always open for new designs for NF26 - 34
But it may take quite some time before your design is finally published

Thank you for your attention



Designs for NF22

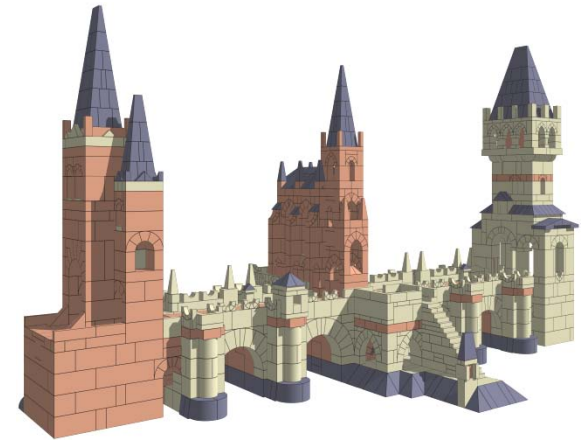
- ◆ **Taken over from** Burkhard Schulz who did this until 2010
- ◆ Burkhard almost finished NF22 (in pdf)
 1. Campanille Gerhart Bruckmann
 2. Bootshaus Diether Wellmann
 3. Gotische Basilika Diether Wellmann
 4. Karawanserai Diether Wellmann
 5. Knast Diether Wellmann
 6. Gotische Kirche Falk Gundel (from Richter design)
 7. Jagdschloss Falk Gundel (from Richter design)
 8. Kirche Bäretzwil Walter Hürlimann (Eigene Entwürfen, Reinhardt)
 9. Barockschlosschen Gerhart Bruckmann (only in AnkerPlan)
 10. Gotische Kathedrale Falk Gundel (2x NF22), not yet completed in AP

Designs for NF26

- | | |
|------------------|-------------------|
| 1. Landhuis | George Bielen |
| 2. Frauenkirche | Falk Gundel |
| 3. Villa 1912 | Diether Wellmann |
| 4. Erlenisbrücke | Diether Wellmann |
| 5. Gotische kerk | George Bielen |
| 6. Residenz | Falk Gundel |
| 7. Rathaus | Diether Wellmann |
| 8. Barockschloss | Gerhart Bruckmann |

Where are we, what still to do?

- ◆ **NF 24** (9 designs)
 - Just about finished
 - To be published in paper print??
- ◆ **NF 22** (9 designs, mostly done by Burkhard Schulz)
 - Will be published in Burkhard's format (A4)
 - To be completed this summer?
- ◆ **NF 26** (8 designs)
- ◆ **NF 28** (3 designs)
- ◆ **NF 30** (7 designs)
- ◆ **NF 32** (3 designs)
- ◆ **NF 34** (19 designs)
- ◆ It will cost us many years to publish the remaining **40** designs as decent drawings



Erlebnisbrücke Wellmann NF26



Villa 2 Wytttenbach NF34