

24

Status of the CVA design committee

Baukunst im Kleinen (BiK)

**Martin van Beuzekom, George Bielen,
Fred Hartjes and Guus van Kessel**

Designs of Architectural Models,

to be erected with RICHTER'S "ANCHOR BLOCKS".
U. S. Patents March 6th 1900.

No. 24 new series.

Twelfth standard for building with stones of the large caliber.

Composed by several CVA members and executed by BiK.

Modelos
de Construção
No. 24 nueva serie.
Decimono grado de construcciones
con piedras de gran calibre.
Compostos por varios partidos
y ejecutados por BiK.
Registrado I

No. 24 neue Folge.

(Zwölfte Stufe für das Bauen mit Großkaliber - Steinen)

Entworfen von mehrere CVA Mitglieder und ausgeführt von BiK.

Modelos
de Construção
No. 24 nova série.
Decimo segundo grau para construir com pedras de
grande calibre.
Compostos por varios membros CVA
e executados por BiK.
Registrado I

Modèles de Construction

No. 24 nouvelle édition.

Douzième degré de construction exécutées à l'aide de pierres grand calibre

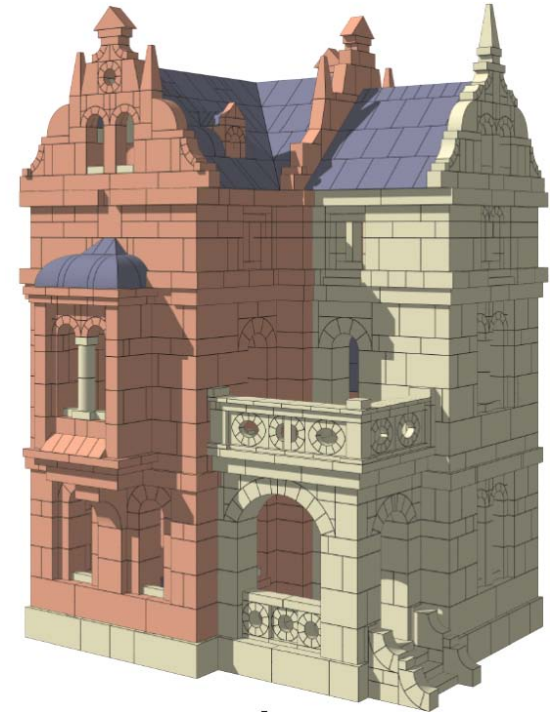
Conçus par plusieurs membres du CVA et exécutés par BiK.

Reproduction interdite !

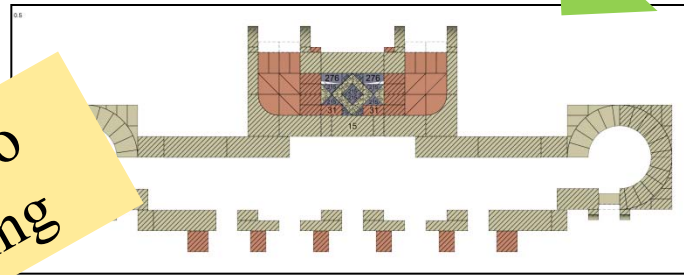
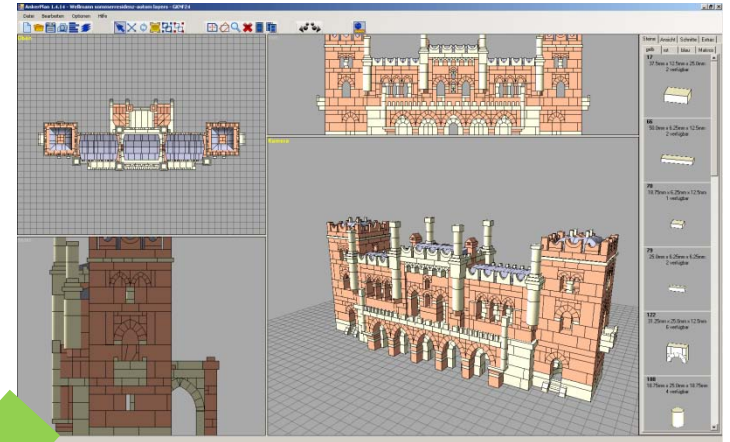
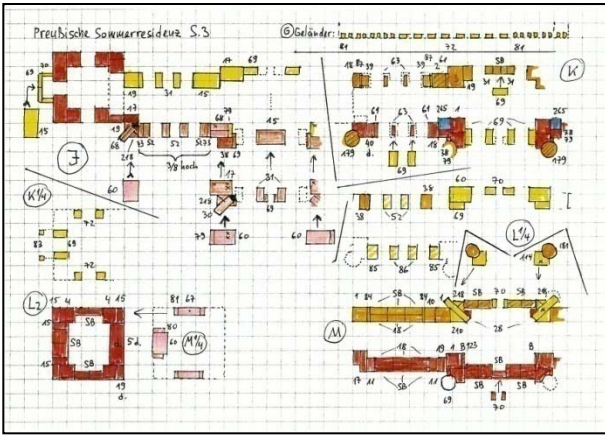
CVA meeting
Hilversum, April 21, 2012

Purpose of “Baukunst im Kleinen” (BiK)

- ◆ Reviewing **new** designs for the stone sets that are produced by the new Anker factory
- ◆ => Presently only NF sets
- ◆ A design published by BiK has the **guarantee** that
 - The building can be made with the stones of the set it is intended for
 - The building is stable
 - The common Ankerfriend can built it without much problems
 - At least 75% of the stones is actually used
 - The building has certain esthetical qualities
 - The design is drawn according to Richter standards
- ◆ ~~we do not consider large designs requiring specific stone sets~~

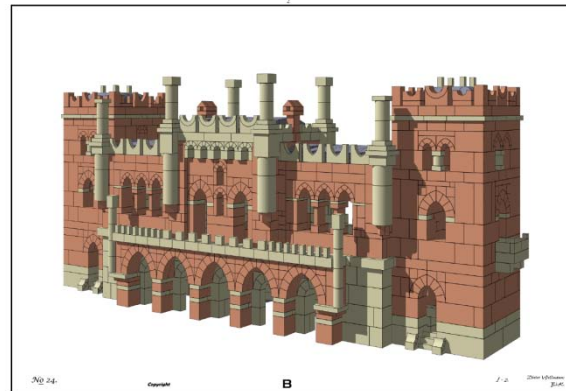


Villa 24 Gundel NF24



Working method

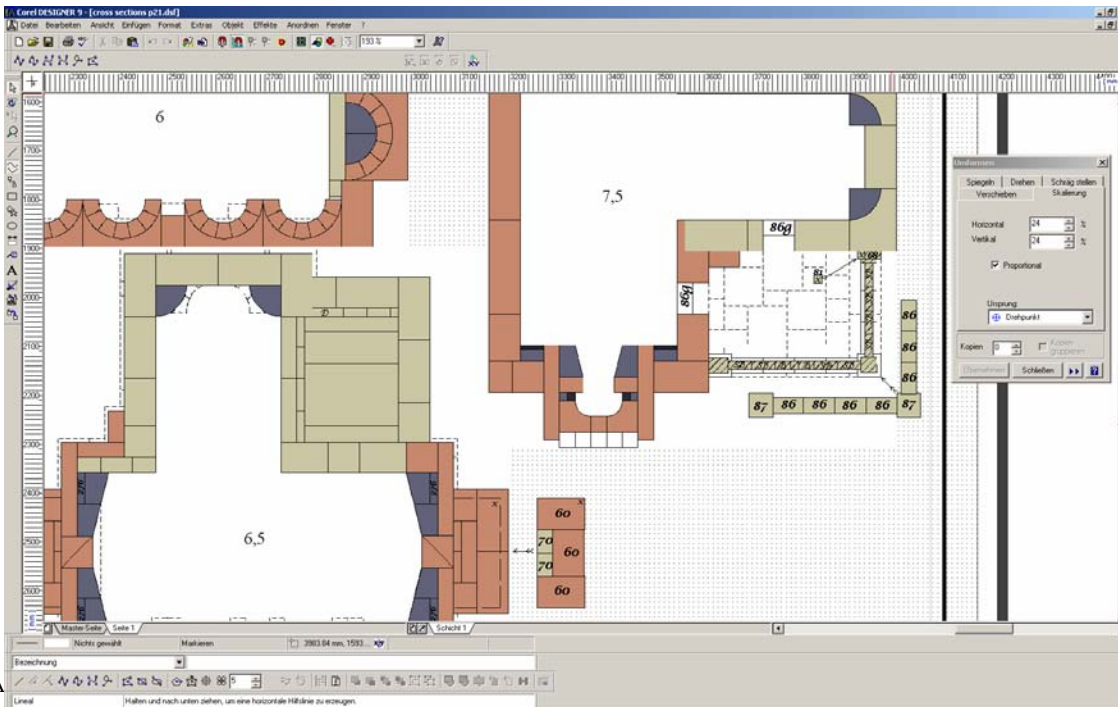
From draft design to publication drawing



Drafting tools

- ◆ **Assembly program: AnkerPlan** instead of AnkerCAD
 - ◆ Calculating shadows using POV-Ray
 - ◆ Generating cross sections
- ◆ Other tools
 - ◆ **Micrografx Designer 9** (vector program)
 - ◆ **Digital Image 2006 Suite Edition Editor** (Photoshop based)

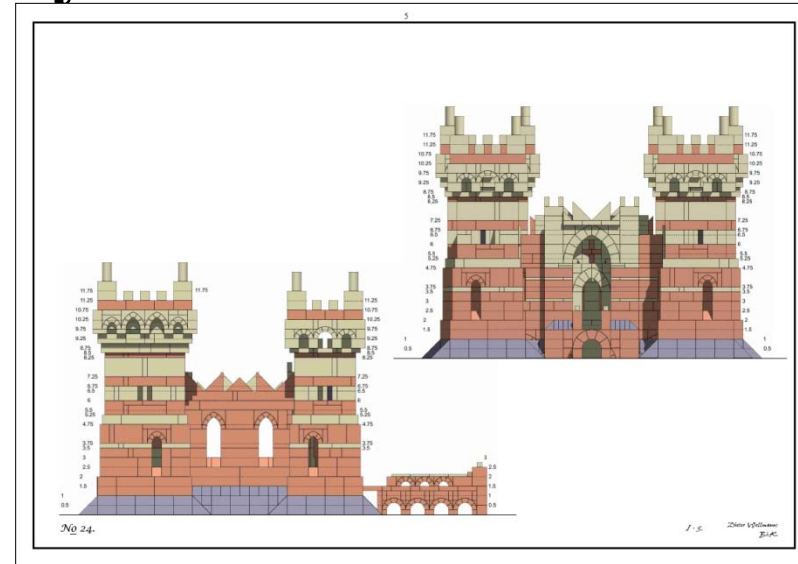
AnkerPlan and POV-Ray are freely available for CVA members



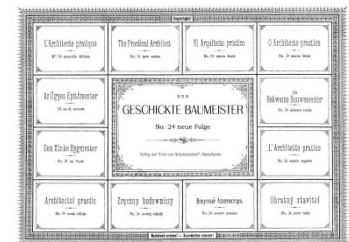
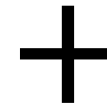
Gotische kerk Bielen NF26

BiK drafting style

- ◆ Based on Richter style
 - So no stone numbers unless really needed
- ◆ but:
 - Adding gable views (generated by AnkerPlan)
 - Arches also indicated when visible in 3D views
 - Layers indicated by height in stones, not by letter
- ◆ Paper: **A3** from NF24 on
 - Better visibility, larger cross sections



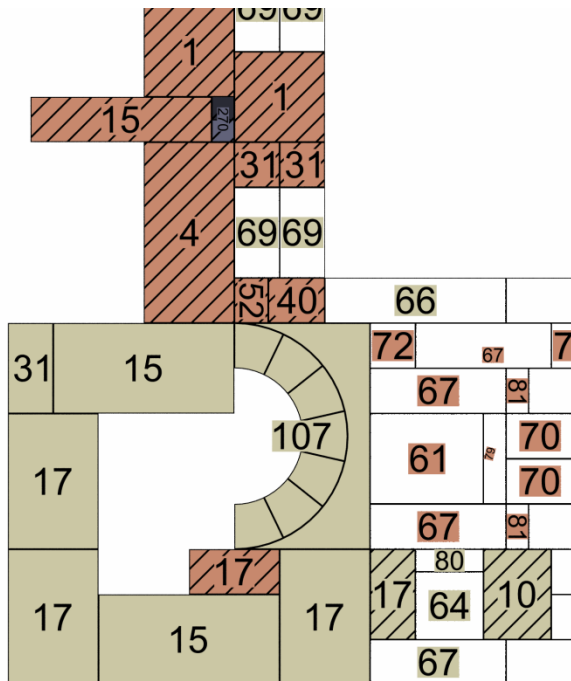
- ◆ Two booklets
- ◆ Availability



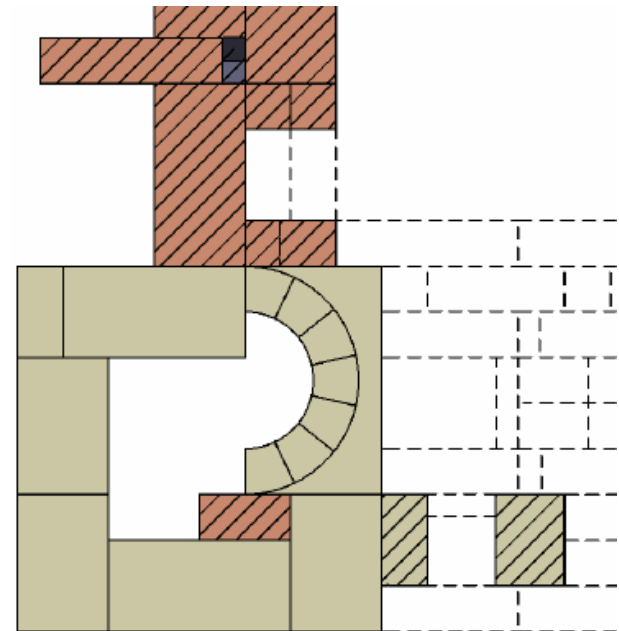
- Presently only virtually on my home page (<http://www.nikhef.nl/~i56/Anker.html>)
- Soon on new Anker site: (<http://www.ankerstein.ch/downloads/CVA/CVA.htm>)
- In paper print as well??

Stone numbers on cross sections: yes/no?

- ◆ AnkerPlan may generate them automatically
- ◆ But Richter did **NOT** mark stones
 - Builder should be keen enough to find out himself
- ◆ Even so did Burkhard unless when needed
- ◆ BiK did **NOT** give stone numbers in NF24 booklet
 - Aesthetically more nice
 - We check if the cross sections are sufficiently clear for the common Anker friend



CVA n

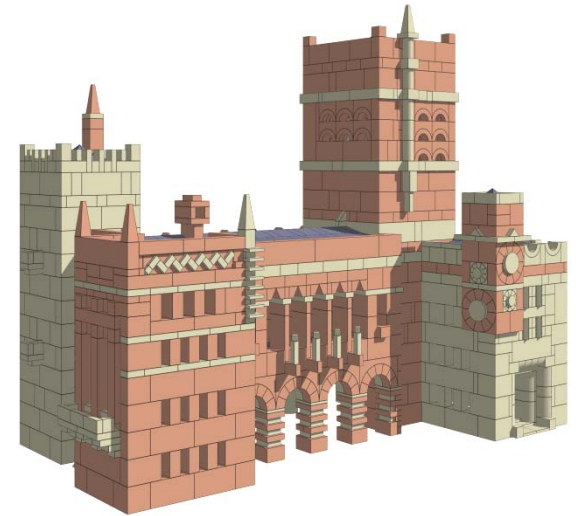


Fred Hartjes

Progress

- ◆ We are still following a learning curve
 - We have defined the basic style
 - Working method more and more refined
 - But still occasionally details need to be set / problems to be solved

- ◆ Drafting goes gradually faster
 - But still substantial time needed to enhance the quality of the AnkerPlan drawings
 - Line quality
 - Position errors
 - Only BiK member Martin van Beuzekom can do this



Rathaus Well-

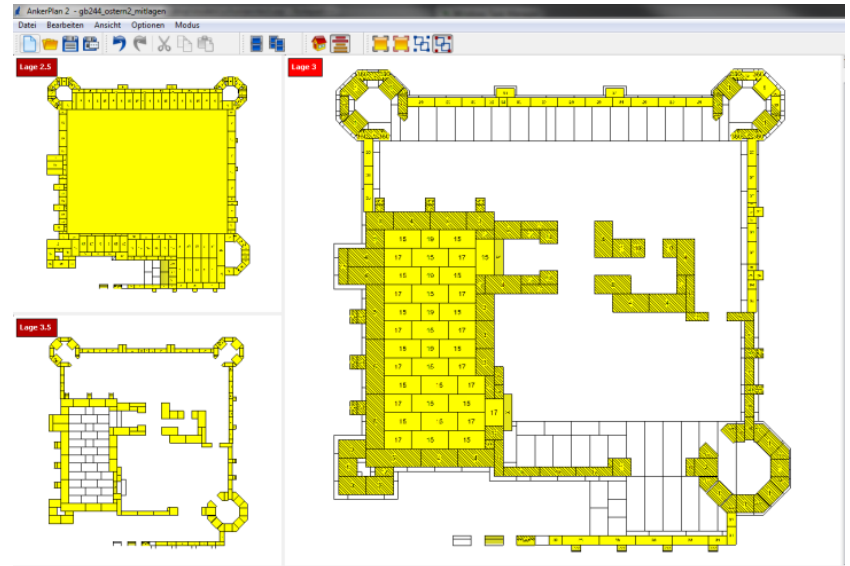
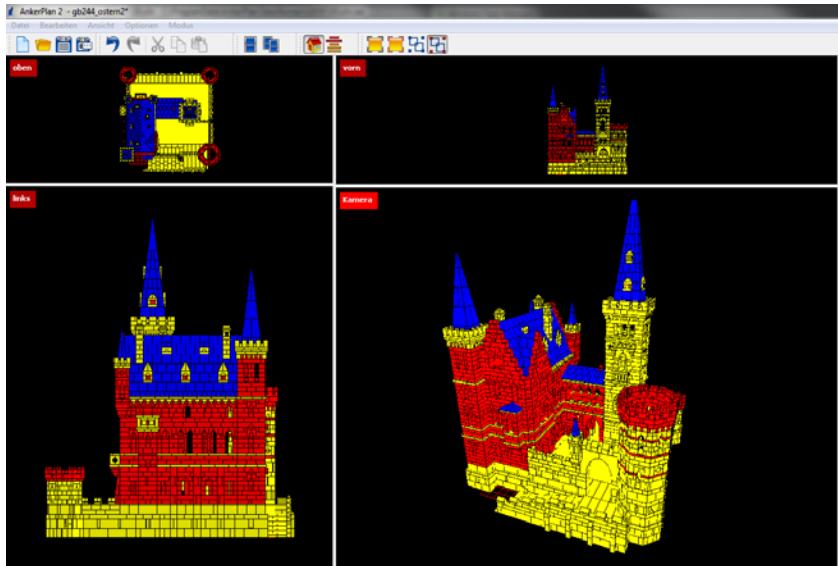
◆ Two times physically building and corrections remains very time-consuming

New BiK members needed

- ❑ Checking validity of a design by building from draft
- ❑ AnkerPlan drawings
- ❑ Checking final drawings (errors, comprehensibility)

AnkerPlan being renewed by Flying Cat

- ◆ Is being completely rewritten
 - Big enterprise, already going on for 10 months
- ◆ Three people from Flying Cat involved
- ◆ Basic work is done, but still working on installer, documentation, styling
- ◆ First alfa-test version expected May/June
- ◆ But several months needed in addition to come to usable version



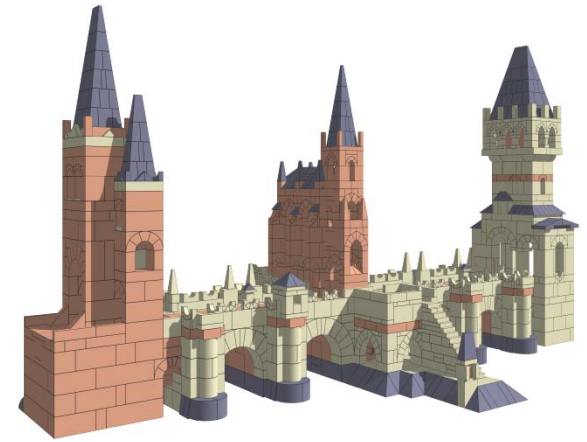
Status of BiK

8-Apr-12		-----gebouwd door:-----										Ontwerpen in behandeling				
Volg#	Ontvangen	ontwerper	nummer	naam	NF set	Annie	George	Fred	Guus	Martin	Wie heeft het onder zich?	eindbeoordeling	status	Naar Burkhard	In AnkerPlan	Richter-tekeningen
1		Wellmann	105	Kastell	24	XXX	XXX				Fred	6/5/2009	afgerond	XXX	XXX	XXX
12	9/4/2009	van Kessel		Station Nijmegen	24	XXX				XXX	Fred, Martin	17/1/2010	afgerond	XXX	XXX	XXX
13	29/3/2009	van Kessel		Station Marienbaum	24	XXX				XXX	Martin	16/11/2009	afgerond	XXX	XXX	XXX
35	25/3/2011	Wellmann	80	Sommerresidenz	24			XXX			Fred		in review		XXX	XXX
40	8/3/2011	Gundel		Bergfried	24						George		in review		XXX	XXX
41	15/3/2011	Gundel		Wasserpalais	24						Guus		in review		XXX	XXX
45	5/6/2011	Wellmann	216	Wasserschloss	24	XXX					Guus		oud review		XXX	XXX
47	5/6/2011	Gundel		Villa-1	24						Guus		in review		XXX	
53	18/2/2012	Pachner		Chartres	24				XXX		Fred		in review		XXX	
3		Bielen		Landhuis	26	XXX		XXX			Fred	24/1/2009		XXX		
4		Gundel	42	Frauenkirche Dresden	26	XXX	XXX				Fred	25/12/2008		XXX		
9		Wellmann	112	Villa 1912	26	XXX	XXX				Fred	4/4/2009		XXX		
33	16/3/2011	Wellmann	91	Erlebnisbrucke	26	XXX	XXX	XXX			Fred		in review			
34	28/3/2011	Bielen		Gotische Kerk	26						Fred		nog niet in review		XXX	
46	5/6/2011	Gundel		Residenz	26						Fred		nog niet in review			
48	5/6/2011	Wellmann	94	Rathaus	26		XXX				George		in review		XXX	
49	4/2/2012	Bruckmann		Barockschloss	26						Fred		nog niet in review			
2		Wellmann	99	Prefecture	28	XXX	XXX					12/12/2008	afgerond	XXX		
6		Wellmann	97	Ungarisches Thermalbad	28	XXX		XXX				6/5/2009	afgerond	XXX		
11	22/1/2009	Bruckmann		Huize Ruurlo	28	XXX	XXX					1/11/2009	afgerond	XXX		
8		Bielen		Villa in classicistische stijl	30	XXX		XXX				4/6/2009	afgerond	XXX	XXX	
10	23/12/2008	Wellmann	110	Rom. Doppelkapelle	30	XXX		XXX			Fred	6/5/2009	afgerond	XXX		
16	17/10/2009	Wellmann	124	Haupt Postamt	30	XXX					Fred	17/2/2010	afgerond	XXX		
36	6/3/2011	Fritsche		Kirche	30						Fred		nog niet in review		XXX	
37	6/3/2011	Fritsche		Lerbach	30						Fred		nog niet in review		AnkerCAD	
38	6/3/2011	Fritsche		Schleuse	30						Fred		nog niet in review		AnkerCAD	
39	6/3/2011	Fritsche		Wimpfen	30						Fred		nog niet in review		AnkerCAD	
14	6/4/2009	Wellmann	121	Proviant Magazin	32		XXX		XXX		Fred	12/3/2010	afgerond	XXX	XXX	
15	28/4/2009	Wellmann	122	Gotische Zentralkirche	32	XXX			XXX		Fred	22/11/2009	afgerond	XXX		
17	10/11/2009	Bruckmann		Kongresshaus	32	XXX			XXX		Fred		afgerond			
18	27/1/2010	Bruckmann		Stadtter	34						Fred		nog niet in review			
19	27/1/2010	Bruckmann		Gralsburg	34	XXX					Martin		in review			
20	27/1/2010	Bruckmann		Festhalle	34		XXX		XXX		George		to designer			
21	27/1/2010	Bruckmann		Wandelhalle	34						Fred		Al beoordeeld (Burkhard)			
22	27/1/2010	Bruckmann		Aussichtsturm	34				XXX		Fred		in review			
23	27/1/2010	Bruckmann		Sportplatz mit Klubhaus	34						Fred		nog niet in review			
24	24/4/2010	H.de Jonge		St. Nectaire	34	XXX	XXX				Fred		to designer			
26	15/5/2010	Bielen		Hotel Anker	34	XXX				XXX	Fred		to designer			
27	6/5/2010	Wytenbach	7	Villa2 im Kirchenfeld	34			XXX			Fred		in review		XXX	
29	9/12/2010	Wytenbach	2	Fluternkirche	34						Fred		nog niet in review		XXX	
30	9/12/2010	Wytenbach	3	Munster von Bern	34						Fred		in review		XXX	
31	9/12/2010	Wytenbach	4	Gedenkhalle	34						Fred		nog niet in review			
32	30/11/2010	Bielen		Abdijkerk	34				XXX		Guus		in review		XXX	
33	27/4/2011	Wellmann		Lyck tower	34						Fred		nog niet in review			
34	27/4/2011	Wellmann		Wallfahrtskirche	34				XXX		Guus		in review		XXX	
35	29/4/2011	van Kessel		Martinuskerk	34						Fred		nog niet in review		XXX	
50	2/2/2012	Wytenbach	6	Villa Seeblick	34						Fred		nog niet in review		XXX	
51	2/2/2012	Wytenbach	11	Moschee	34					Fred Hartjes			nog niet in review		XXX	
52	2/2/2012	Wytenbach	12	Port Said	34						Fred		nog niet in review		XXX	
28	21/12/2010	Gundel		Kerstboom	34?						Fred, Annie		in review			

Overview of all received designs

Where are we, what still to do?

- ◆ **NF 24** (9 designs)
 - Just about finished
 - To be published in paper print??
- ◆ **NF 22** (9 designs, mostly done by Burkhard Schulz)
 - Will be published in Burkhard's format (A4)
 - To be completed this summer?
- ◆ **NF 26** (8 designs)
- ◆ **NF 28** (3 designs)
- ◆ **NF 30** (7 designs)
- ◆ **NF 32** (3 designs)
- ◆ **NF 34** (19 designs)
- ◆ It will cost us many years to publish the remaining **40** designs as decent drawings



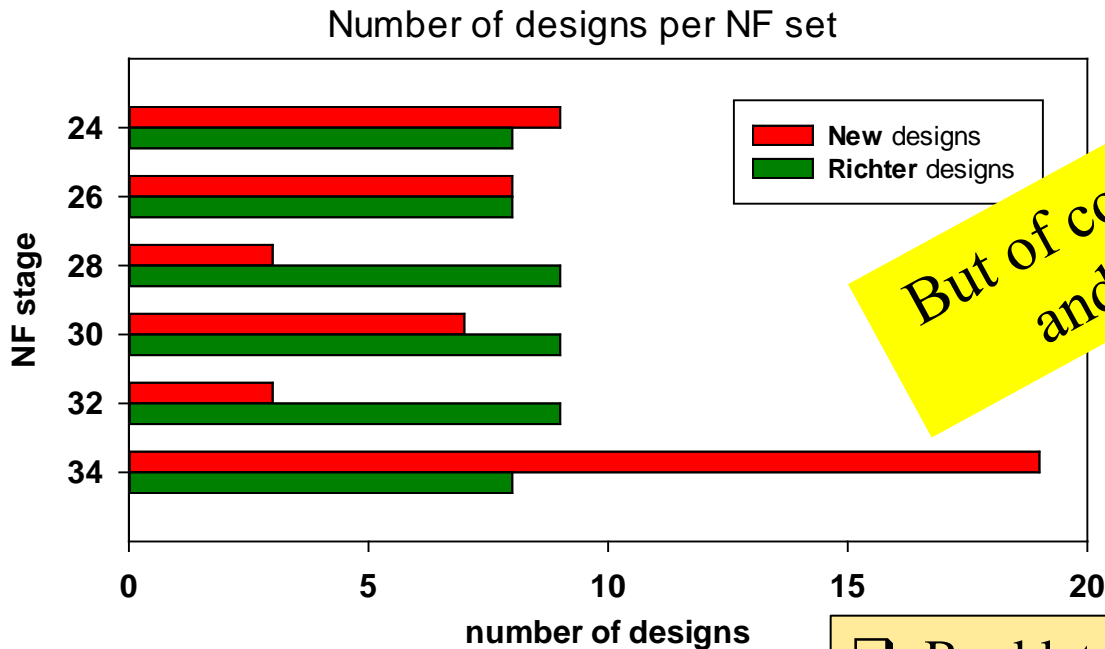
Erlebnisbrücke Wellmann NF26



Villa 2 Wyttenbach NF34

Grouping designs for NF24 - 34

- ◆ Total of **new** designs for NF24 – NF34: **49**
- ◆ Total of **Richter's** designs for NF24 – NF34: **51**
- ◆ But only **3** designs for NF28 and 30

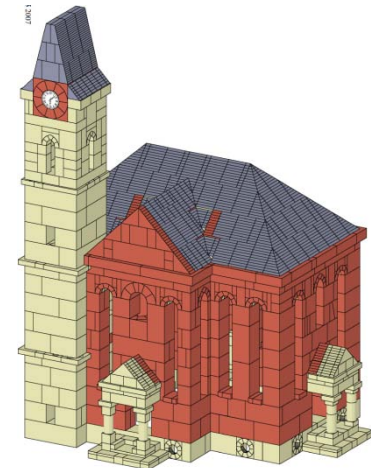
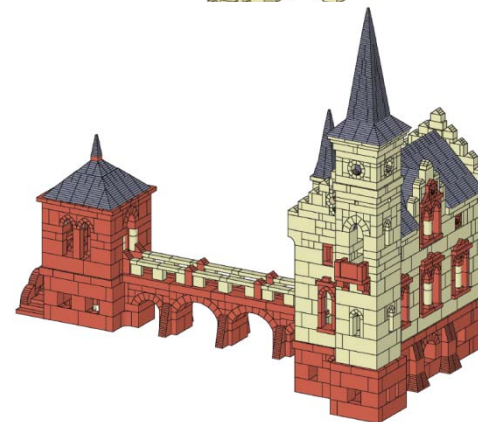
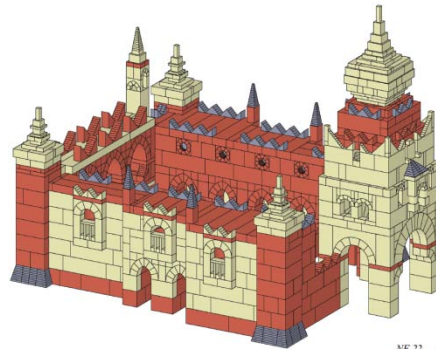
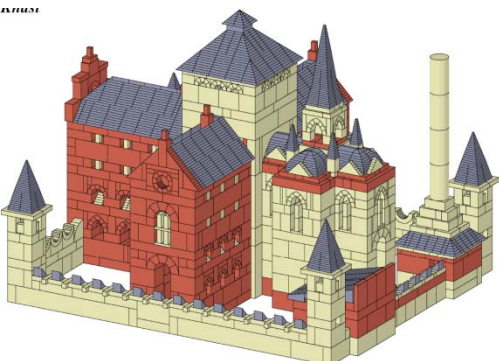
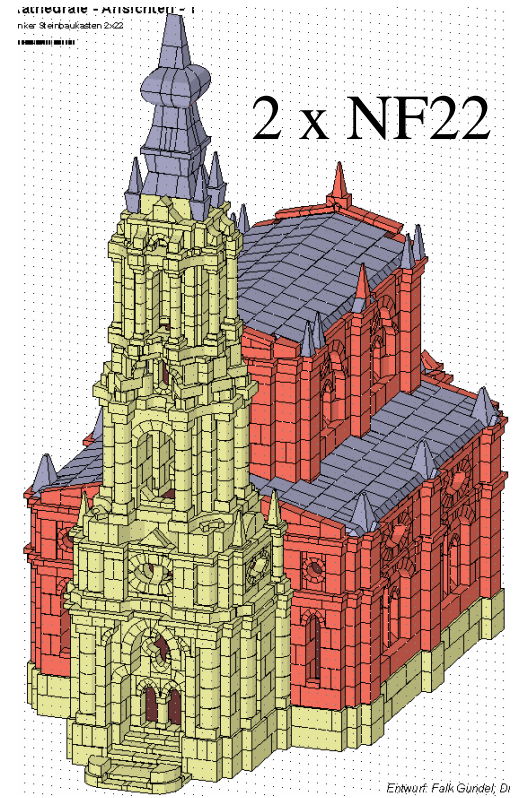
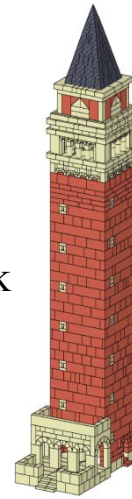
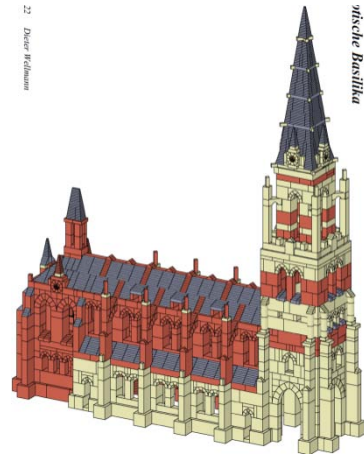
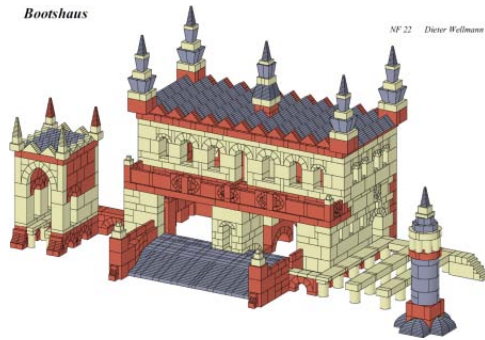


But of course new designs for NF26 and higher are still welcome

- ☐ Booklet for NF24 (**9** designs)
- ☐ Booklet for NF26 + NF28 (**11** designs)
- ☐ Booklet for NF30 + NF32 (**10** designs)
- ☐ **Two** Booklets for NF34 (> **19** designs)

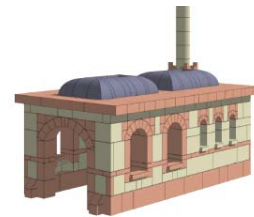
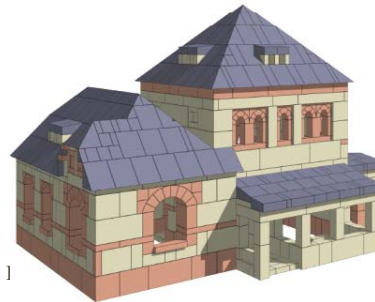
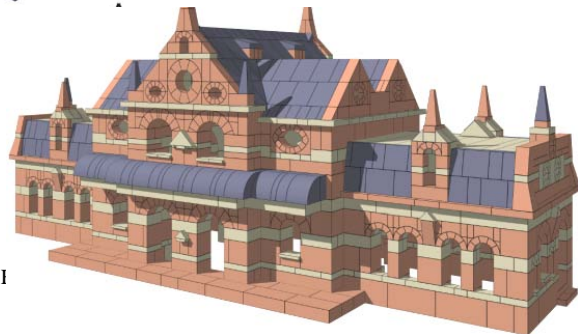
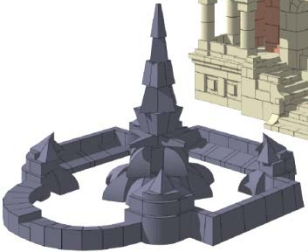
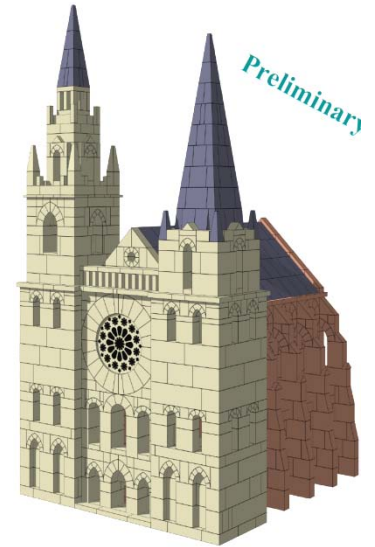
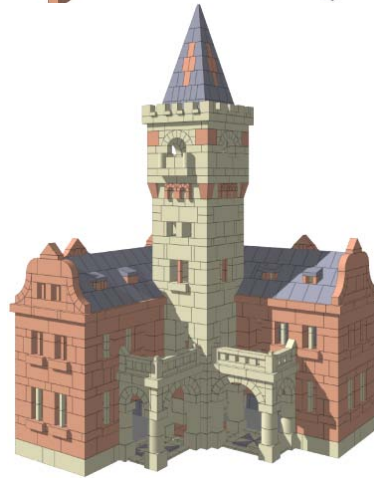
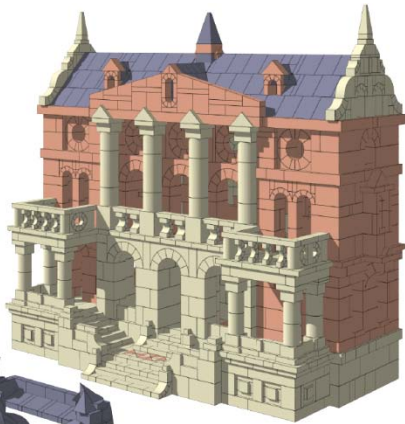
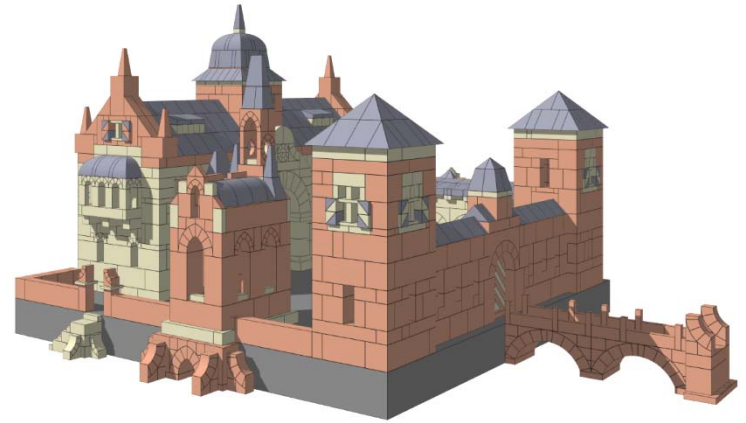
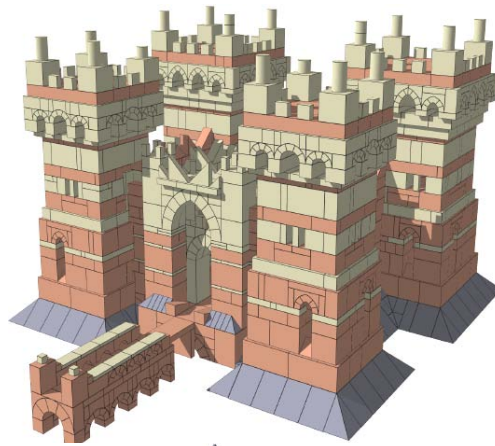
NF 22

- ◆ Mostly drawn by **Burkhard Schulz** (in pdf)
- ◆ Gerhart Bruckmann, Diether Wellmann (4x), Falk Gundel (3x) and Walter Hürlimann



NF 24

Diether Wellmann (3x), Falk Gundel (3x) Guus van Kessel (2x) and Robert Pachner



Received during last 6 months

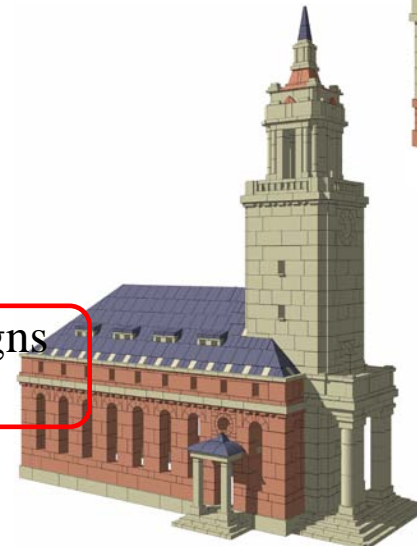
◆ 2 new designs

- Barockschloss (NF26) by Gerhart Bruckmann
- Chartres Cathedral (NF24) by Robert Pachner

◆ 5 existing Wytttenbach designs (NF34) converted to AnkerPlan by Ulrich Kadereit

- Villa Seeblick
- Moschee
- Schiffahrts – Gesellschaft Port – Said
- Villa im Kirchenfeld
- Fluternkirche

◆ => our inventory contains 49 (accepted) designs for NF24 or higher



Concluding

◆ Made lot of effort to finish NF24

- Soon on Anker site <http://www.ankerstein.ch/downloads/CVA/CVA.htm>

◆ Completing NF22

- 8 designs done by Burkhard
- 1 design to be done (2 x NF22)

◆ Continuing optimizing drafting format and working methods

- Gradually going more smoothly

◆ Drafting really started now

- 49 designs in total
- Still 40 to do => many years to complete

◆ New AnkerPlan progressing well

- Big effort by Flying Cat

**But more BiK members needed
to build each design twice**

**Always open for new designs for NF26 - 34
But it may take quite some time before your design
is finally published**

Thank you for your attention



Designs for NF22

- ◆ **Taken over from** Burkhard Schulz who did this until 2010
- ◆ Burkhard almost finished NF22 (in pdf)
 1. Campanille Gerhart Bruckmann
 2. Bootshaus Diether Wellmann
 3. Gotische Basilika Diether Wellmann
 4. Karawanserai Diether Wellmann
 5. Knast Diether Wellmann
 6. Gotische Kirche Falk Gundel (from Richter design)
 7. Jagdschloss Falk Gundel (from Richter design)
 8. Kirche Bäretzwil Walter Hürlimann (Eigene Entwürfen, Reinhardt)
 9. Barockschlosschen Gerhart Bruckmann (only in AnkerPlan)
 10. Gotische Kathedrale Falk Gundel (2x NF22), not yet completed in AP

Designs for NF26

- | | |
|------------------|-------------------|
| 1. Landhuis | George Bielen |
| 2. Frauenkirche | Falk Gundel |
| 3. Villa 1912 | Diether Wellmann |
| 4. Erlenisbrücke | Diether Wellmann |
| 5. Gotische kerk | George Bielen |
| 6. Residenz | Falk Gundel |
| 7. Rathaus | Diether Wellmann |
| 8. Barockschloss | Gerhart Bruckmann |